

Sixth Form Life and Rules

2023

Sixth Form Team

Duncan Warren - Head of Sixth Form

Alex Humm - Deputy Head of Sixth Form/Head of Y13

Tamara Alam - Head of Y12

Jo Ebsworth - Sixth Form Student Services Manager

Ofsted on Hollyfield Sixth Form

“In the sixth form, leaders have planned a transition programme to **help students adapt to the demands of advanced study.**”

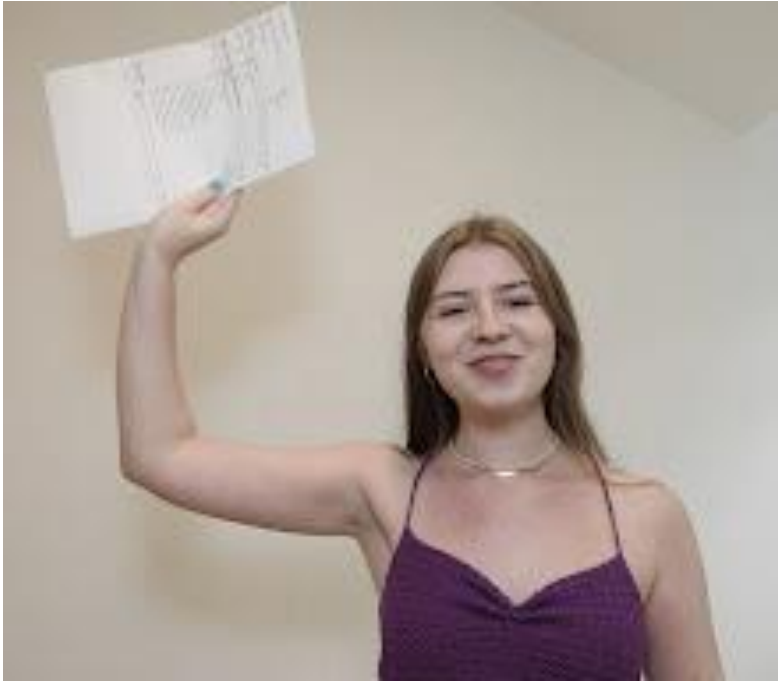
“Students value the support they receive in the sixth form, especially with applications for university. **Students achieve well**, and they go on to study at a range of universities, including those in the Russell group. “

“Pupils, parents and carers told us **they value the amazing range of opportunities available.** Sixth-form students like the debates and other enrichment activities. “

Below is a list of local sixth forms that Hollyfield outperformed, or in the case of Waldegrave, achieved the same Value Added:

Hollyfield School	0.05
Waldegrave	0.05
Glyn	0.03
Tiffin Girls	0.02
Esher College	-0.01
Richard Challoner	-0.08
Coombe Girls	-0.12
Holy Cross	-0.37
Coombe Boys	-0.54

Destinations- Oxbridge Success in a Competitive Year



- **Corrine McCarthy**
Biochemistry at
Oxford University
A*A*A*
- **3 students in the**
last 2 years into
Oxbridge

<u>Corrine McCarthy</u>	Biochemistry at Oxford University	A*A*A*	
<u>Joshua Caro</u>	Government and Politics at Bristol University	A*A A	
<u>Daniil Manokhin</u>	Engineering Apprenticeship	A*A*A	
<u>Jess McNaughton</u>	Biological Sciences at Birmingham University	A*A* A	
<u>Hannah Mitchell</u>	Automated Engineering at Loughborough	A*AA	
<u>Arseniy Bykov</u>	Product Design Engineering at Loughborough	A* A C	
<u>Ketley Brushaber</u>	to study in USA	A*AC	
<u>Jasmine Cancho-Edwards</u>	Gap Year & Fashion College	A*A	
<u>Shaun Mboura</u>	Accounting and Financial Management at Loughborough University	A*A*B	
<u>Edward Nicholas</u>	Music Tech at Portsmouth University	BB Distinction*	

Over the past 3 years - 40% Students go to Russell Group Universities

[University of Birmingham](#)

[University of Bristol](#)

[University of Cambridge](#)

[Cardiff University](#)

[Durham University](#)

[University of Edinburgh](#)

[University of Exeter](#)

[University of Glasgow](#)

[Imperial College London](#)

[King's College London](#)

[University of Leeds](#)

[University of Liverpool](#)

[London School of Economics & Political Science](#)

[University of Manchester](#)

[Newcastle University](#)

[University of Nottingham](#)

[University of Oxford](#)

[Queen Mary University of London](#)

[Queen's University Belfast](#)

[University of Sheffield](#)

[University of Southampton](#)

[University College London](#)

[University of Warwick](#)

[University of York](#)



Our Vision

Confidence

Worldliness

Work ethic

GCSE

BTEC / AS / A2

University



How do they make the jump?

Effort- 1 hour private study for every hour in the classroom

Organisation- at least one folder for each subject

Independent study

Enrichment – Wednesday afternoons

Utilising free periods – help plan the weeks free lessons with your child

Work/ life balance

Structure of the week

Monday - Briefing / assembly - key information 8.30

Wednesday - P5&6 Enrichment



Expectations

- 18 months! Work hard from the start
- If students have a lessons P1, students need to register with tutor or they come in for lessons
- Medical appointments must not be during lessons
- Driving test ok- driving lessons outside of school
- Red slip if you are more than 5 minutes late
- Job- not too many hours, not during the school day- 10 to 12 hours max
- Students must be on top of:
 - Google classroom
 - School email

95% Attendance

We may ask students to work in school from 8- 4 every day if

- If attendance drops below 95%
- If work is not being submitted
- Student is behind on coursework

If your son/daughter is unwell or is going to be absent please use the direct 6th form line - 0208 339 4507

Sixth Form Folders

- Assessment Tracker
- Sixth Form Termly Feedback Sheet
- PLCs (Personalised Learning Checklists)
- Subject Topic Dividers
- Past paper/ Trial Exam Papers
- Essays, Questions and Marked Work
- Evidence of NS which Develop Learning
- Evidence of Independent Study



Key Points

- Exceptions are: **Art, Product Design, Photography, Media**
- Students can have exercise books as well
- The students do not need to bring the folders in every day
- The cost of the folders is £9 each inclusive of the dividers and inserts.
- Exception is students who were free schools meals or bursary

Study Skills and Organisation

Monday 25th September- 8.30 a.m in 6th Form
Common Room

Sixth Form Folder Organization

Study skills

Y12: Structure of the Year

- **Oct 2022** - Y12 Readiness Review (4 week review)
- **Jan 2023** - All Y12 students Walking Talking Mocks
- **Jan 2023** - Trial Exams 1
- All students down to 3 subjects
- **Apr 2023** - Trial Exam 2
- **Jun 2023** - Y12 End of Year Examination
- **Summer term** - Y12 WEX

Oxbridge and Medical Sciences programme

- Oxford, Cambridge, Imperial, Medicine and Veterinary Sciences.
- Open days and visits
- GCSE grades 8-9
- Interview support
- Admissions tests prior to application
- Check each university website for their admissions tests

The logo for UCAS (Universities and Colleges Admissions Service) is displayed in a large, bold, sans-serif font. The letters 'U', 'C', and 'S' are black, while the letter 'A' is a vibrant red. The 'A' is stylized with a sharp, upward-pointing peak.



unifrog

UCAS

University and Apprenticeship Information
Evening – **April 25th 2024**

University and Apprenticeship Fair

University of Guildford - March 2024



Webinars

StudentStream

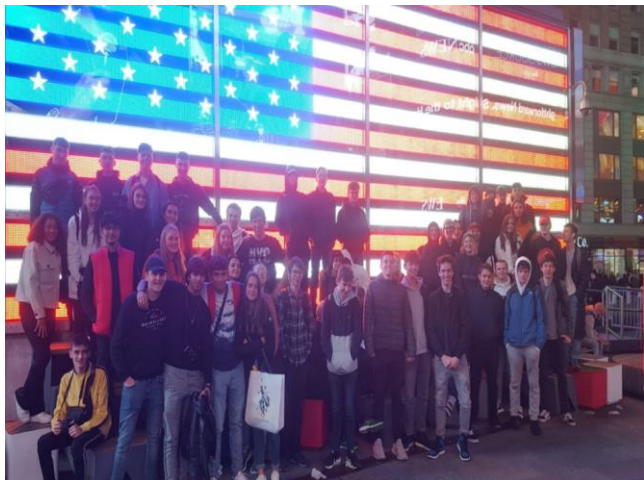


SURREY SPRING 2023
UNIVERSITY OF SURREY

TUESDAY
7TH MARCH



6th form Trips



- Paris
- Ski Trip: Canada
- Geneva: CERN
- New York and Washington



Enrichment- get involved

Go Ape - All Y12

Guest speakers

Football

Netball

Badminton

Rugby

Debates

Cooking for Uni

Young Enterprise

Film Club

First Aid

Political hustings

Trips

Every
wednesday !



WEX & Volunteering

- Compulsory requirement in Y12 for entry into Y13
- Takes place in Summer term
- Students seek own placements
- Cannot be paid P/T jobs
- Informs UCAS/ Personal statements
- Some date flexibility

Senior Prefect team

Charity	Environment
Inter-house	Peer-Mentoring

Q & A